

OFFICIAL DESCRIPTION CHANGE

OFFICE: Transportation Data

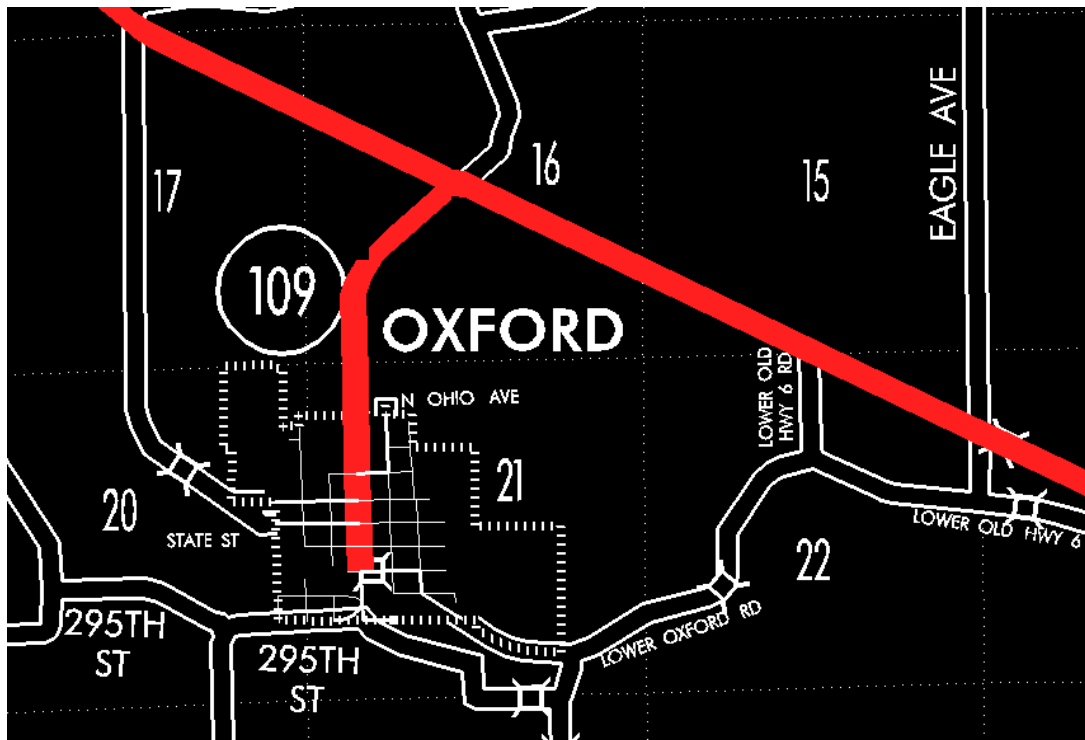
EFFECTIVE DATE: 07-01-2003

ENTERED BY: Stefani Wonders

ENTERED DATE: 08-23-2006

DISCUSSION/BACKGROUND:

Senate File 451 transferred Iowa 109 in its entirety, in Johnson County, to city and county jurisdiction on July 1, 2003.



COMMISSION ORDER

DIVISION: Planning & Research

COMMISSION ORDER NUMBER: PR-79-272

SUBMITTED BY: C.I. MacGillivray

MEETING DATE: 11-2-78

DISCUSSION/BACKGROUND:

Due to a review of our Primary Road System Records, Iowa 109 in Johnson County should be deleted and the new description added should be officially included into the Primary System.

PROPOSAL/ACTION RECOMMENDATION:

It is recommended that the old description of Iowa 109 in Johnson County be deleted and the new description, as referred in the attached detailed description, be included in the Primary Road System effective upon the adoption of this resolution.

Locate Iowa 109 and its extension in Johnson County as follows:

Oxford:

Beginning on an unnamed street on the south side of Center Street; thence northerly to the north corporation line connecting with an unnamed street.

Beginning on the north corporation line of the City of Oxford connecting with an unnamed street; thence in a northerly and northeasterly direction through Sections 21 and 16-T80N-R8W to a point a short distance northeast of the center of Section 16-T80N-R8W (junction US 6).

OFFICIAL DESCRIPTION CHANGE

COUNTY: Johnson

CITY OF: Oxford

ROUTE: Iowa 109

APPROVAL DATE: 1-13-60

Commencing on Augusta Street at the south side of Center Street; thence northerly on Augusta Street to the north corporation line.

NOTE: To become effective on January 1, 1961.

OFFICIAL DESCRIPTION CHANGE

COUNTY: Johnson

ROUTE: Iowa 109

APPROVAL DATE: 4-14-37

Beginning on the north corporation line of the Town of Oxford connecting with Augusta Street thence in a northerly and northeasterly direction through Sections 21 and 16-T80N-R8W to a point a short distance northeast of the center of Section 16-T80N-R8W.