

**OFFICIAL DESCRIPTION CHANGE**

**OFFICE:** Transportation Data

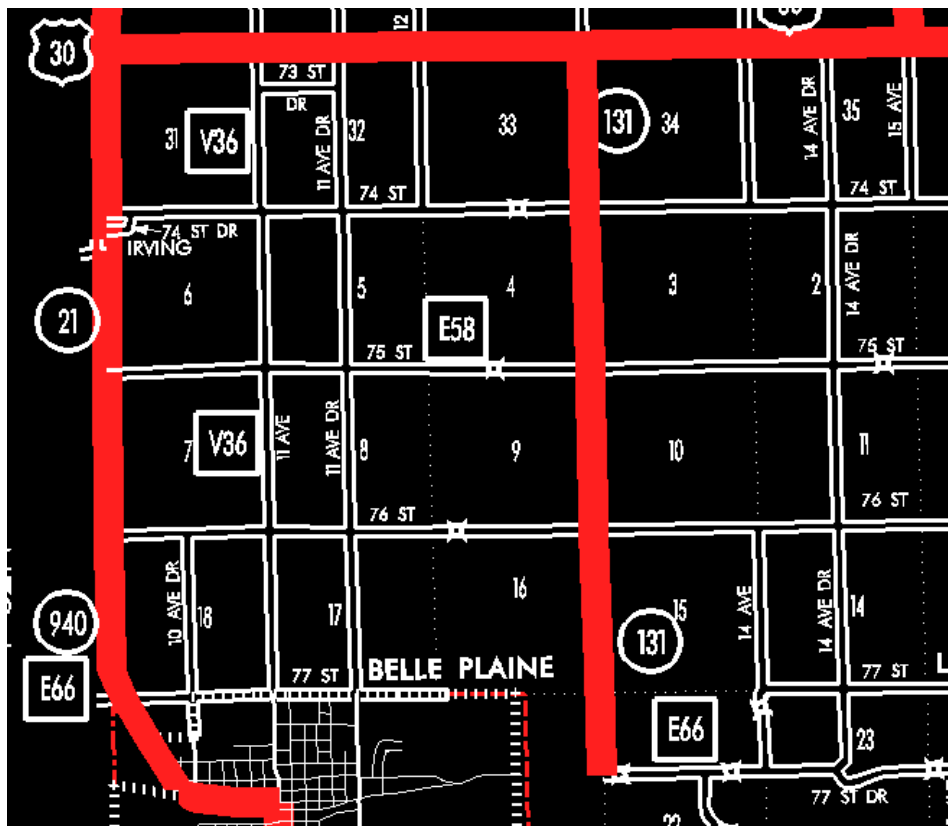
**EFFECTIVE DATE:** 07-01-2003

**ENTERED BY:** Stefani Wonders

**ENTERED DATE:** 08-24-2006

**DISCUSSION/BACKGROUND:**

Senate File 451 transferred Iowa 131 in its entirety, in Benton County, to county jurisdiction on July 1, 2003.



**OFFICIAL DESCRIPTION CHANGE**

**COUNTY:** Benton

**ROUTE:** Iowa 131

**STAFF ACTION NUMBER:** S-03-0131

**APPROVAL DATE:** 08-13-2002

## **DISCUSSION/BACKGROUND:**

Transfer of jurisdiction agreement number 99-16-071 (also agreement number 1999-TJ-001), between the City of Belle Plaine and the Iowa Department of Transportation, transferred that portion of Iowa 131 from the intersection of 7th Avenue and 13th Street; thence east on 13th Street to 12th Street; thence easterly on 12th Street to the east corporation line (a point near the Cent. of Section 21-T82N-R12W) to city jurisdiction on June 4, 2002.

Transfer of jurisdiction agreement number 1999-TJ-009, between Benton County and the Iowa Department of Transportation, transferred that portion of Iowa 131 from the east corporation line of the City of Belle Plaine (a point near the Cent. of Section 21-T92N-R12W) connecting with 12th Street; thence east to a point near the E ¼ Corner of Section 21-T82N-R12W (junction of County Road E-66) to county jurisdiction on June 28, 2002.

New Description – Iowa 131 and its extensions in Benton County described as follows:

Beginning at a point near the E ¼ Corner of Section 21-T82N-R12W (junction of County Road E-66); thence northerly following substantially the section line of Sections 22, 15, 10, and 3-T82N-R12W and Section 34-T83N-R12W to a point near the NW Corner of Section 34-T83N-R12W (intersection of US 30).

## **PROPOSAL/ACTION RECOMMENDATION:**

It is recommended that the old description of Iowa 131 and its extensions in Benton County be deleted and the new description be included in the Primary Road System.

## **OFFICIAL DESCRIPTION CHANGE**

**COUNTY:** Benton

**ROUTE:** Iowa 131

**STAFF ACTION NUMBER: S-87-687**

**APPROVAL DATE: 12-18-86**

New Description – Iowa 131 and its extension in Benton County described as follows:

Belle Plaine:

Beginning on 13th Street at the intersection with 7th Avenue; thence east on 13th Street to 12th Street; thence easterly on 12th Street to the east corporation line.

Beginning at the east corporation line of Belle Plaine connecting with 12th Street; thence east to a point near the E  $\frac{1}{4}$  Corner of Section 21-T82N-R12W; thence northerly following substantially the section line of Sections 22, 15, 10, and 3-T82N-R12W, continuing northerly along the section line of Section 34-T83N-R12W to a point near the NW Corner of Section 34-T83N-R12W (intersection of US 30).

**COMMISSION ORDER**

**DIVISION:** Planning & Research

**COMMISSION ORDER NUMBER:** PR-79-272

**SUBMITTED BY:** C.I. MacGillivray

**MEETING DATE:** 11-2-78

**DISCUSSION/BACKGROUND:**

Due to a review of our Primary Road System records, Iowa 131 in Benton County, Iowa should be deleted and the new description added should be officially included into the Primary System.

Iowa 131 begins at the junction of Iowa 21 and 212 in Belle Plaine and travels easterly and northerly to the junction of US 30 approximately ½ mile east and 4 ½ north of Belle Plaine.

**PROPOSAL/ACTION RECOMMENDATION:**

Locate Iowa 131 and its extensions in Benton County as follows:

Belle Plaine:

Beginning on Seventh Street; thence easterly to the east corporation line connecting with an unnamed street.

Beginning at the east corporation line of the City of Belle Plaine connecting with an unnamed street; thence east to a point near the E ¼ Corner of Section 21-T82N-R12W; thence northerly following substantially the section line of Sections 22, 15, 10, and 3-T82N-R12W, continuing northerly along the section line of Section 34-T83N-R12W to a point near the NW Corner of Section 34-T83N-R12W (intersection of US 30).

NOW, THEREFORE: Be it resolved that the Iowa Department of Transportation approve the location of Iowa 131 in Benton County, Iowa.

NOTE: To become effective upon adoption of this resolution.

REVISED: 12-18-86

**COMMISSION ORDER**

**DIVISION:** Planning & Research

**SUBMITTED BY:** Raymond L. Kassel

**MEETING DATE:** 8-10-76

**DISCUSSION/BACKGROUND:**

Due to a review of our Primary Road System records, Iowa 131 in Benton County, Iowa should be deleted and the new description added should be officially included into the Primary System.

Iowa 131 begins at the junction of Iowa 21 and 212 in Belle Plaine and travels easterly and northerly to the junction of US 30 approximately ½ mile east and 4 ½ north of Belle Plaine.

**PROPOSAL/ACTION RECOMMENDATION:**

Locate Iowa 131 and its extensions in Benton County as follows:

Belle Plaine:

Beginning on Seventh Street; thence easterly to the east corporation line connecting with an unnamed street.

Beginning at the east corporation line of the City of Belle Plaine connecting with an unnamed street; thence east to a point near the E ¼ Corner of Section 21-T82N-R12W; thence northerly following substantially the section line of Sections 22, 15, 10, and 3-T82N-R12W, continuing northerly along the section line of Section 34-T83N-R12W to a point near the NW Corner of Section 34-T83N-R12W (intersection of US 30).

NOW, THEREFORE: Be it resolved that the Iowa Department of Transportation approve the location of Iowa 131 in Benton County, Iowa.

NOTE: To become effective upon adoption of this resolution.

**OFFICIAL DESCRIPTION CHANGE**

**COUNTY:** Benton

**CITY OF:** Belle Plaine

**ROUTE:** Iowa 131

**APPROVAL DATE:** 1-5-38

Commencing on Thirteenth Street at the east corporation line; thence westerly on Thirteenth Street to Seventh Street.

**OFFICIAL DESCRIPTION CHANGE**

**COUNTY:** Benton

**ROUTE:** Iowa 131

**APPROVAL DATE:** 10-27-37

Beginning on the east corporation line of the city of Belle Plaine connecting with Thirteenth Street thence east to a point near the E  $\frac{1}{4}$  Corner of Sec. 21-T82N-R12W; thence north following substantially the section line to a point approximately 600 feet south of the NW Corner of Section 34-T83N-R12W; thence curving in a northeasterly direction to a point approximately 600 feet east of the NW Corner of Section 34-T83N-R12W.