

**OFFICIAL DESCRIPTION CHANGE****OFFICE:** Transportation Data**EFFECTIVE DATE:** 09-14-2007**ENTERED BY:** Darlene Bovee**ENTERED DATE:** 11-15-2007**DISCUSSION/BACKGROUND:**

Ottumwa:

Transfer of jurisdiction agreement number 2004-TJ-013, between the City of Ottumwa and the Iowa Department of Transportation, transferred that portion of Unsigned Iowa 334 from the intersection of US 34 and Roemer Street; thence easterly on Roemer Street to the east corporation line (approximately 680 feet west of the E  $\frac{1}{4}$  Corner Section 29-T72N-R13W) to city jurisdiction on September 5, 2007.

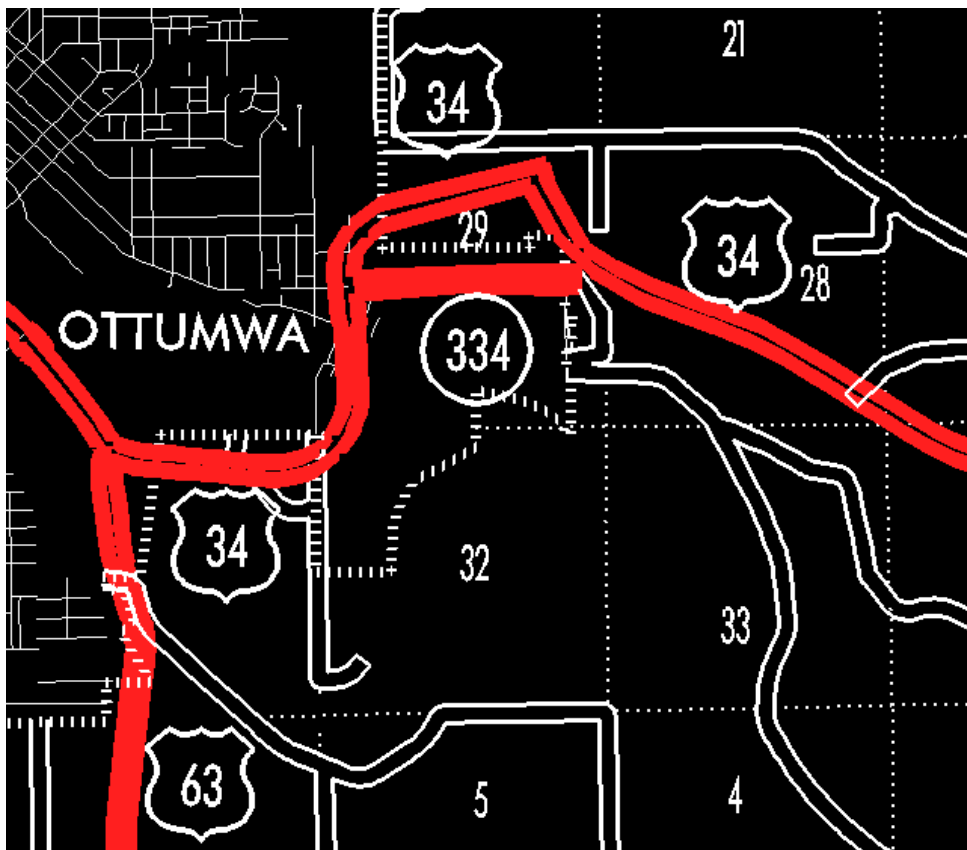
Transfer of jurisdiction agreement number 2004-TJ-012, between Wapello County and the Iowa Department of Transportation, transferred that portion of Unsigned Iowa 334 from the east corporation line of Ottumwa connecting with Roemer Street; thence easterly to a point approximately 130 feet west of the E  $\frac{1}{4}$  Corner Section 29-T72N-R13 to county jurisdiction on September 5, 2007.

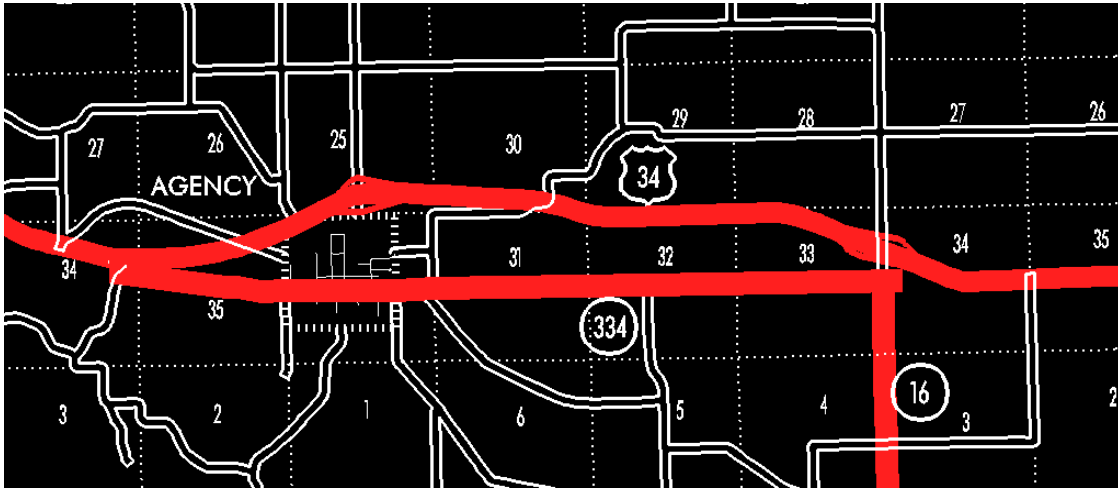
Transfer of jurisdiction agreement number 2005-TJ-003, between Wapello County and the Iowa Department of Transportation, transferred that portion of Unsigned Iowa 334 beginning at a point approximately 1470 feet south and 850 feet west of the NE Corner Section 34-T72N-R13W; thence southeasterly through Sections 34 and 35-T72N-R13W to the west corporation line of Agency connecting with Main Street (approximately 2680 feet south of the NW Corner Section 36-T72N-R13W) to county jurisdiction on September 5, 2007.

Agency:

Transfer of jurisdiction agreement 2005-TJ-002, between the City of Agency and the Iowa Department of Transportation, transferred that portion of Unsigned Iowa 334 from the west corporation line connecting with Main Street; thence easterly to the east corporation line (approximately 1320 feet west of the E  $\frac{1}{4}$  Corner Section 36-T72N-R13W) to city jurisdiction on September 14, 2007.

Transfer of jurisdiction agreement 2005-TJ-003, between Wapello County and the Iowa Department of Transportation, transferred that portion of Unsigned Iowa 334 from the east corporation line of Agency connecting with Main Street; thence easterly through Section 36-T72NR13W and Sections 31, 32, 33 and 34-T72N-R12W to dead end (approximately 650 feet east of the W  $\frac{1}{4}$  Corner Section 34-T72N-R12W) to county jurisdiction on September 5, 2007.





#### **OFFICIAL DESCRIPTION CHANGE**

**OFFICE:** Transportation Data

**EFFECTIVE DATE:** 10-12-2006

**ENTERED BY:** Darlene Bovee

**ENTERED DATE:** 11-14-2007

#### **DISCUSSION/BACKGROUND:**

Due to the relocation of US 34 east of Ottumwa and the bypass at Agency, Old US 34 was designated Unsigned Iowa 334 and the description should be added to reflect this.

New description – Unsigned Iowa 334 and its extensions in Wapello County described as follows:

Ottumwa:

Beginning at the intersection of US 34 and Roemer Street; thence easterly on Roemer Street to the east corporation line (approximately 680 feet west of the E  $\frac{1}{4}$  Corner Section 29-T72N-R13W).

Beginning on the east corporation line of Ottumwa connecting with Roemer Street; thence easterly to a point approximately 130 feet west of the E  $\frac{1}{4}$  Corner Section 29-T72N-R13.

Beginning again at a point approximately 1470 feet south and 850 feet west of the NE Corner Section 34-T72N-R13W; thence southeasterly through Sections 34 and 35-T72N-R13W to the west corporation line of Agency connecting with Main Street (approximately 2680 feet south of the NW Corner Section 36-T72N-R13W).

Agency:

Beginning on west corporation line connecting with Main Street; thence easterly to the east corporation line (approximately 1320 feet west of the E  $\frac{1}{4}$  Corner Section 36-T72N-R13W).

Beginning on the east corporation line of Agency connecting with Main Street; thence easterly through Section 36-T72N-R13W and Sections 31, 32, 33, and 34-T72N-R12W to dead end (approximately 650 feet east of the W  $\frac{1}{4}$  Corner Section 34-T72N-R12W).

