

OFFICIAL DESCRIPTION CHANGE

OFFICE: Transportation Data

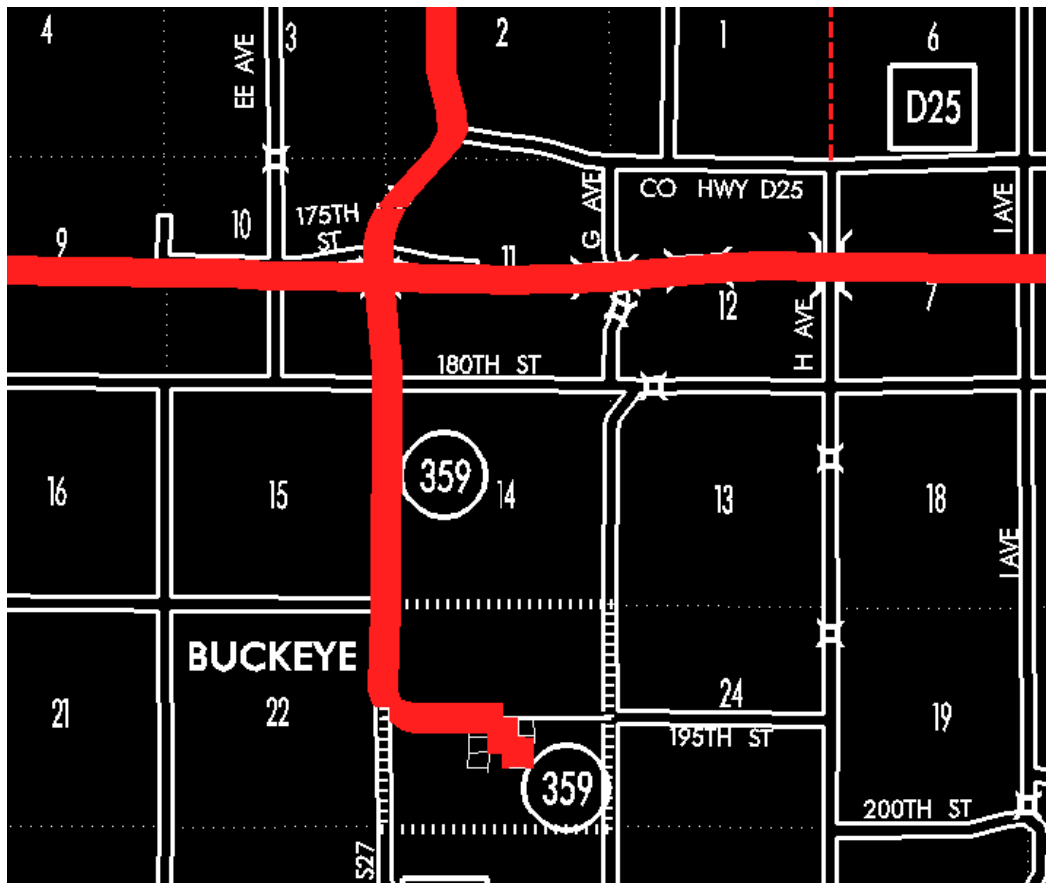
EFFECTIVE DATE: 07-01-2003

ENTERED BY: Stefani Wonders

ENTERED DATE: 08-28-2006

DISCUSSION/BACKGROUND:

Senate File 451 transferred Iowa 359 in its entirety, in Hardin County, to city and county jurisdiction on July 1, 2003.





OFFICIAL DESCRIPTION CHANGE

COUNTY: Hardin

ROUTE: Iowa 359

STAFF ACTION NUMBER: S-87-731

APPROVAL DATE: 12-18-86

New Description – Iowa 359 and its extension in Hardin County described as follows:

Buckeye:

Beginning on Ellsworth Avenue at the intersection of East Street; thence west on Ellsworth Avenue to Locust Street; thence north on Locust Street to Prairie Avenue; thence west on Prairie Avenue to unnamed street; thence northwest on unnamed street to the west corporation line.

Beginning at the west corporation line of Buckeye, connecting with an unnamed street; thence north following substantially the section line of Sections 23, 14, and 11-T88N-R22W to a point approximately $\frac{1}{4}$ mile north of the SW Corner Section 11-T88N-R22W; thence north through the east part of Section 10-T88N-R22W to a point approximately 1,150 feet north of the E $\frac{1}{4}$ Corner said Section 10; thence northeast through Section 11 and 2-T88N-R22W to a point near the center of the SW $\frac{1}{4}$ of Section 2-T88N-R22W; thence north through Section 2-T88N-R22W following substantially the west quarter section line to a point approximately $\frac{1}{4}$ mile east of the NW Corner Section 2-T88N-R22W (a point near the SW Corner Section 31-T89N-R21W); thence north following substantially the section line of Section 31, 30, and 19-T89N-R21W to a point on the west corporation line of the City of Alden near the NW Corner of Section 19-T89N-R21W (junction of US 20).

COMMISSION ORDER

DIVISION: Planning & Research

COMMISSION ORDER NUMBER: PR-79-272

SUBMITTED BY: C.I. MacGillivray

MEETING DATE: 11-2-78

DISCUSSION/BACKGROUND:

Due to a review of our Primary Road System records, Iowa 359 in Hardin County should be deleted and the new description added should be officially included into the Primary Road System.

Iowa 359 begins in Buckeye and travels in a northerly direction terminating at the junction of US 20 at the west edge of Alden, Iowa.

PROPOSAL/ACTION RECOMMENDATION:

Locate Iowa 359 and its extension in Hardin County as follows:

Buckeye:

Beginning on an unnamed street at East Street; thence westerly, northerly, westerly and northwesterly to the west corporation line, connecting with an unnamed street.

Beginning at the west corporation line of the City of Buckeye, connecting with an unnamed street; thence northerly following substantially the section line of Sections 23, 14, and 11-T88N-R22W to a point approximately $\frac{1}{4}$ mile north of the SW Corner Section 11-T88N-R22W; thence northerly through the east part of Section 10-T88N-R22W to a point approximately 1150 feet north of the E $\frac{1}{4}$ Corner said Section 10; thence northeasterly through Section 11 and 2-T88N-R22W to a point near the center of the SW $\frac{1}{4}$ of Section 2-T88N-R22W; thence northerly through Section 2-T88N-R22W following substantially the west quarter section line to a point approximately $\frac{1}{4}$ mile east of the NW Corner Section 2-T88N-R22W (a point near the SW Corner Section 31-T89N-R21W); thence northerly following substantially the section line of Section 31, 30, and 19-T89N-R21W to a point on the west corporation line of the City of Alden near the NW Corner of Section 19-T89N-R21W (junction of US 20).

NOW, THEREFORE: Be it resolved that the Iowa Department of Transportation approve the location of Iowa 359 in Hardin County, Iowa.

NOTE: To become effective upon adoption of this resolution.

REVISED: 12-18-86

OFFICIAL DESCRIPTION CHANGE

COUNTY: Hardin

ROUTE: Iowa 359

APPROVAL DATE: 10-25-38

Buckeye:

Commencing on Prairie Avenue at the west corporation line; thence east on Prairie Avenue to Locust Street; thence south on Locust Street to Ellsworth Avenue; thence east on Ellsworth Avenue to East Street.

Beginning on the west corporation line of the Town of Buckeye connecting with Prairie Avenue; thence north following substantially the section line to a point approximately $\frac{1}{4}$ mile north of the W $\frac{1}{4}$ Corner of Section 11-T88N-R22W; thence northeasterly through Section 11 and 2-T88N-R22W to a point near the center of the SW $\frac{1}{4}$ Section 2-T88N-R22W; thence north through Section 2-T88N-R22W to a point approximately $\frac{1}{4}$ mile east of the NW Corner of Section 2-T88N-R22W (SW Corner Section 31-T89N-R21W); thence north following substantially the section line to a point on the west corporation line of the Town of Alden near the NW Corner of Section 19-T88N-R21W (junction US 20).

REVISED: 11-2-78